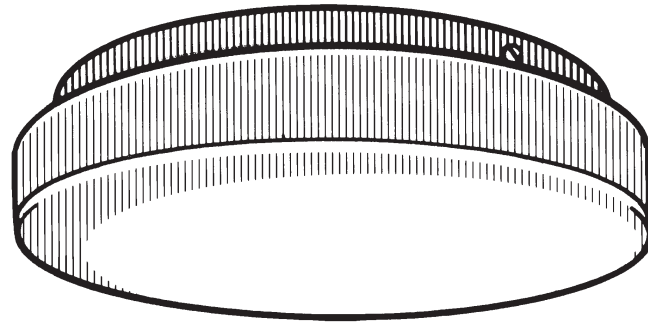


C2000 SERIES



DESCRIPTION

These round, white, drum shaped cloud fixtures can be used in a wide variety of locations. Two 1-lamp circline and two 2-lamp circline models are available. Three additional models are available using (1), (2), or (3) 13 watt twin tubes.

CONSTRUCTION

Housing is die formed of 22 gauge cold rolled steel. Standard back (top) with universal keyhole slots for mounting and wiring holes for electrical connection.

FINISH

Interior and exterior are finished in lighting grade white baked gloss enamel paint.

DIFFUSER

The lens is injection molded of 100% virgin translucent white acrylic, with a smooth finish. Thickness is .100" Lens is held in place by three thumbscrews in the housing.

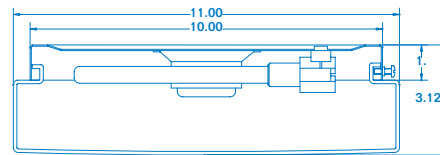
ELECTRICAL

All "CIRCLINE" units are wired with U.L. listed normal power factor, rapid start, Class P ballasts, for 120 volt, 60 hertz A.C. operation. Ballasts are provided in a white can to minimize shadowing. Circline sockets are 4-pin straight insertion type. Lamp retention is provided with 3 spring clips per lamp.

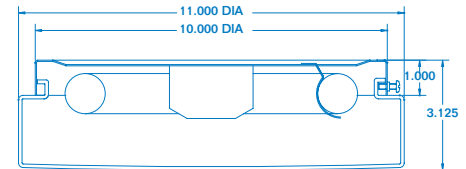
All "COMPACT FLUORESCENT" units are wired with U.L. listed, normal power factor, preheat type, Class P ballasts, for 120 volt, 60 hertz A.C. operation. Lampholders are 2-pin, GX23 base for 13 watt lamps only. Power supply connections must be made inside a junction box (not provided). All fixtures are U.L. listed DAMP LOCATION.

OPTIONS

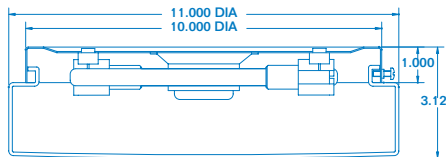
Housing is also available in black, chrome, brass, or other custom color finishes (contact factory). Ballast upgrades and options available (contact factory). Other voltages, lamps, listings, and ratings available on request (contact factory).



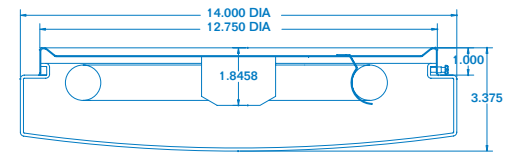
C2013



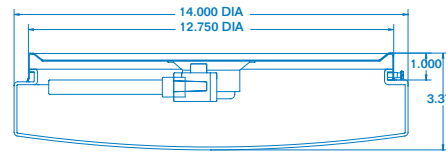
C2022



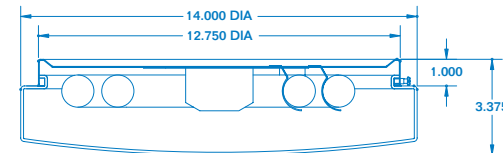
C2026



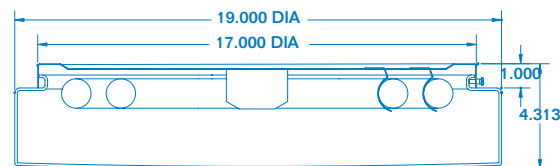
C2032



C2039



C2054



C2072

ORDERING INFORMATION

Model No.	DIMENSIONS				
Circline	Twin Tubes	Fluorescent Lamps	Diameter	Depth	Mtg. Ill.
	C2013	(1) 13 watt Twin Tube	11"	3 $\frac{3}{8}$ "	121
C2022		(1) 22 watt Circline	11"	3 $\frac{3}{8}$ "	125
	C2026	(2) 13 watt Twin Tubes	11"	3 $\frac{3}{8}$ "	121
C2032		(1) 32 watt Circline	14"	3 $\frac{3}{8}$ "	126
	C2039	(3) 13 watt Twin Tubes	14"	3 $\frac{3}{8}$ "	120
C2054		(1) 22 watt & (1) 32 watt Circline	14"	3 $\frac{3}{8}$ "	126
C2072		(1) 32 watt & (1) 40 watt Circline	19"	4 $\frac{5}{16}$ "	119