

DESCRIPTION

These round, white, saucer shaped fixtures feature a narrow white aluminum trim around the outside. They can be ceiling or wall mounted. Two 1-lamp circline and two 2-lamp circline models are available. Three additional models are available using (1), (2), or (3) 13 watt twin tubes.

CONSTRUCTION

Housing is die formed of .040" aluminum. Standard back (top) with universal keyhole slots for mounting and wiring holes for electrical connection.

FINISH

Interior and exterior are finished in lighting grade white baked gloss enamel paint.

DIFFUSER

The lens is formed of virgin translucent white acrylic, in a flexible convex shape with a smooth finish. Thickness is .070". Lens lifts and shifts into the opening of the face and is held in place by three spring clips inside the housing.

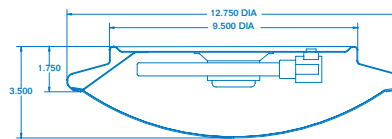
ELECTRICAL

All "CIRCLINE" units are wired with U.L. listed normal power factor, rapid start, Class P ballasts, for 120 volt, 60 hertz A.C. operation. Ballasts are provided in a white can to minimize shadowing. Circline sockets are 4-pin straight insertion type. Lamp retention is provided with 3 spring clips per lamp.

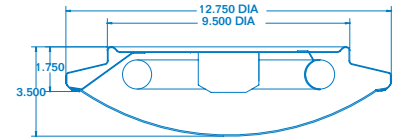
All "COMPACT FLUORESCENT" units are wired with U.L. listed, normal power factor, preheat type, Class P ballasts, for 120 volt, 60 hertz A.C. operation. Lampholders are 2-pin, GX23 base for 13 watt lamps only. Power supply connections must be made inside a junction box (not provided). All fixtures are U.L. listed DAMP LOCATION.

OPTIONS

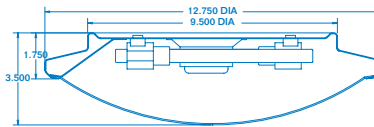
Ballast upgrades and options available (contact factory). Other voltages, lamps, listings, and ratings available on request (contact factory).



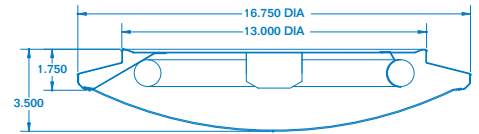
CF2013



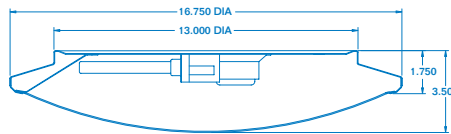
CF2022



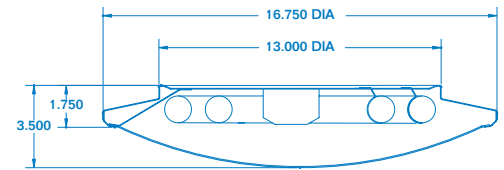
CF2026



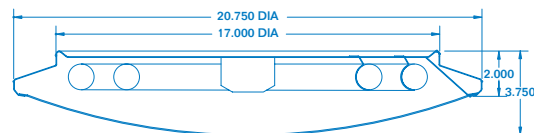
CF2032



CF2039



CF2054



CF2072

ORDERING INFORMATION

Model No.	DIMENSIONS				
Circline	Twin Tube	Fluorescent Lamps	Diameter	Depth	Mtg. Ill.
	CF2013	(1) 13 watt Twin Tube	12 $\frac{3}{4}$ "	3 $\frac{1}{2}$ "	116
	CF2022	(1) 22 watt Circline	12 $\frac{3}{4}$ "	3 $\frac{1}{2}$ "	116
	CF2026	(2) 13 watt Twin Tubes	12 $\frac{3}{4}$ "	3 $\frac{1}{2}$ "	116
	CF2032	(1) 32 watt Circline	16 $\frac{3}{4}$ "	3 $\frac{1}{2}$ "	117
	CF2039	(3) 13 watt Twin Tubes	16 $\frac{3}{4}$ "	3 $\frac{1}{2}$ "	117
	CF2054	(1) 22 & 32 watt Circline	16 $\frac{3}{4}$ "	3 $\frac{1}{2}$ "	117
	CF2072	(1) 32 & 40 watt Circline	20 $\frac{3}{4}$ "	3 $\frac{3}{4}$ "	118