

DESCRIPTION

The traditional-style sculptured frame of these decorative surface fixtures are made of solid wood. Light appears through a smooth acrylic diffuser. Choose from Oak, Cherry, Clear Maple, or White finishes. Each finish is available in three sizes which use (4) 48" lamps, (2) 48" lamps, or (2) 6" U lamps.

CONSTRUCTION

Housing, cover and ends are die formed of 22 GA cold rolled steel. Standard mounting holes and standard wiring knockouts are included, with an extra 2" diameter center knockout on the back for wiring entry.

FINISH

Housing interior and exterior are finished in lighting grade white baked gloss enamel paint.

DIFFUSER

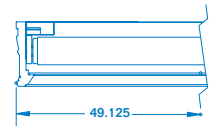
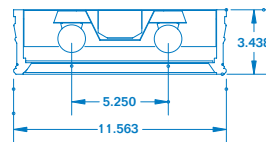
Lens is a one-piece extruded smooth flat lens of translucent white 100% virgin acrylic, .080" thick. The frame is constructed of solid wood with a traditional-style decorative molding. Frame exterior is stained Medium Oak (CTK), Cherry (CTC), Clear Maple (CTM) or Painted White. The entire frame attaches to housing with a pre-installed bracket inside one end and one #8 screw through other end.

ELECTRICAL

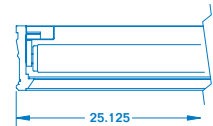
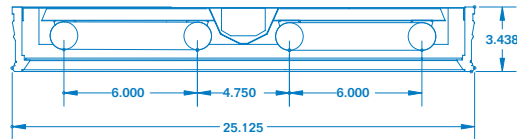
All units with model numbers ending in ES are wired with U.L. listed high power factor, rapid start, Class P, energy saving (ES) full light output, Ⓢ ballasts, for 120 volt, 60 hertz A.C. operation. Lampholders are rotating lock, medium bi-pin type. All fixtures are U.L. listed.

OPTIONS

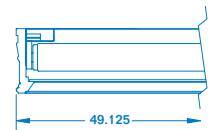
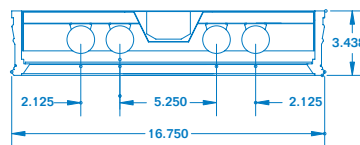
Available in unfinished wood ready for custom staining or painting at jobsite (contact factory). Alternate clear flat prismatic or white drop-dish diffuser available (contact factory). For ballast upgrades and options, refer to back of guide. Other voltages, listings, and ratings available on request (contact factory).



CTK, CTC, CTM, CTW 240



CTK, CTC, CTM, CTW 2U4



CTK, CTC, CTM, CTW 440

ORDERING INFORMATION

DIMENSIONS

Oak	Cherry	Maple	White	Fluorescent Lamps	L	W	D	Mtg. Ill.
CTK240ES	CTC240ES	CTM240ES	CTW240ES	(2) T12 48"	49 ¹ / ₈ "	11 ¹ / ₈ "	3 ¹ / ₈ "	70
CTK2U4ES	CTC2U4ES	CTM2U4ES	CTW2U4ES	(2) T12 6" U	25 ¹ / ₈ "	25 ¹ / ₈ "	3 ¹ / ₈ "	74
CTK440ES	CTC440ES	CTM440ES	CTW440ES	(4) T12 48"	49 ¹ / ₈ "	16 ¹ / ₈ "	3 ¹ / ₈ "	73