

DESCRIPTION

These white metal sided surface mount fixtures feature a drop dish style diffuser. Five sizes are available including a 24" two lamp model, a 24" four lamp model, a 24" square model using two 6" U lamps, a 48" two lamp model and a 48" four lamp model. All models use T12 lamps.

CONSTRUCTION

Housing, cover, ends, and sides are die formed of 22 gauge cold rolled steel. Ends are screwed to housing, and side rails pivot in ends for easy maintenance. Standard mounting holes and standard wiring knockouts are included, with an extra 2" diameter center knockout on the back for wiring entry.

FINISH

Housing and cover interior and exterior are finished in lighting grade white baked gloss enamel paint. Ends and side rails are painted a gloss white enamel.

DIFFUSER

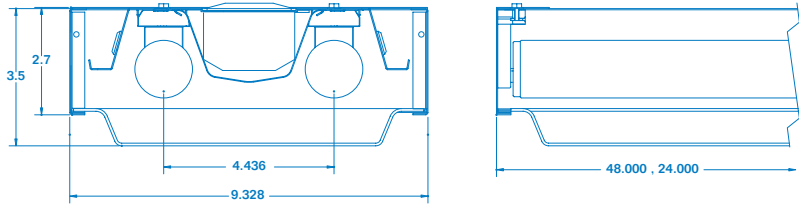
Lens is a one-piece extruded smooth lens of translucent white 100% virgin acrylic, .060" thick, vacuum formed into a drop dish shape that hangs 3/4" below the bottom surface of the frame.

ELECTRICAL

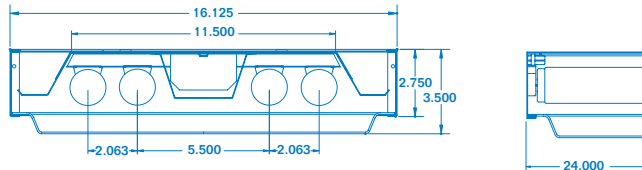
All ES units are wired with U.L. listed high power factor, rapid start, Class P, energy saving (ES), full light output $\text{\textcircled{C}}$ ballasts, for 120 volt, 60 hertz A.C. operation. All non-ES units have trigger start normal power factor ballast. Lampholders are rotating lock, medium bi-pin type. All fixtures are U.L. listed.

OPTIONS

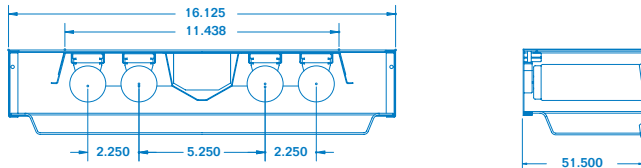
Alternate clear prismatic drop-dish diffuser available (contact factory). For ballast upgrades and options, refer to back of guide. Other voltages, listings, and ratings available on request (contact factory).



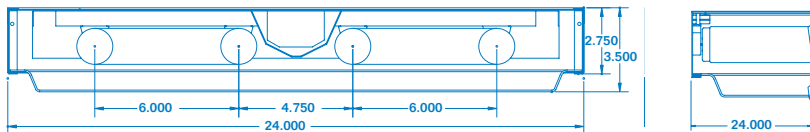
MFW220, MFW240



MFW420



MFW440



MFW2U4

ORDERING INFORMATION

Model No.	Fluorescent Lamps	DIMENSIONS			
		L	W	D	Mtg. Ill.
MFW220	(2) T12 24"	24"	9 ⁵ / ₁₆ "	3 ¹ / ₂ "	14
MFW420	(4) T12 24"	24"	16 ¹ / ₈ "	3 ¹ / ₂ "	25
MFW2U4ES	(2) T12 6" U	24"	24"	3 ¹ / ₂ "	115
MFW240ES	(2) T12 48"	48"	9 ⁵ / ₁₆ "	3 ¹ / ₂ "	32
MFW440ES	(4) T12 48"	48"	16 ¹ / ₈ "	3 ¹ / ₂ "	28